




**Scheda tecnica indumento/Garment technical data sheet. 04845.00**


Identificazione articolo/Item identification					
Cod. comm.le Industrial Starter/ IS commercial item code:	<b>04845</b>	Cod. art. fornitore/ Supplier item code*:	<b>4845</b>	Cod. fornitore/ Supplier code:	<b>101086</b>
Cod. colore Industrial Starter/ Industrial Starter colour code:	<b>040</b> ( blu/blue)	<input checked="" type="checkbox"/>	Articolo del catalogo/Item from catalogue		
	<b>080</b> ( grigio/grey)	<input type="checkbox"/>	Articolo personalizzato/Customized item		
Nome articolo/Item name:	<b>Felpa zip lunga con cappuccio "PASUBIO" / "PASUBIO" full zip sweatshirt w/hood</b>				

Descrizione tecnica dell'articolo/Technical item description			
	Composizione/ Fabric composition	Colore/colour (Pantone)	Peso del tessuto/ Fabric weight [g/m <sup>2</sup> ]
Tessuto esterno / Outer shell :	<b>65% poliestere 35% cotone / 65% polyester 35% cotton</b>	<b>Blu con inserti grigi- Grigio con inserti neri / Blue with grey inserts – Grey with black inserts</b>	<b>315 +/- 5%</b>
Accessori/Accessories:	<b>n. 2 tasche frontali, cappuccio fisso, cerniera centrale lunga in plastica con tirante , inserti elasticizzati sotto le ascelle / n. 2 front pockets, fixed hood, full plastic zip with puller , armpit elasticized inserts</b>		
Loghi e ricami/ Logos & embroideries:	 		
Taglie/Sizes:	<b>S, M, L, XL, XXL, XXXL</b>		
Imballo/Packages:	<b>n. 1 pz per polybag – n. 10 pz per cartone / n. 1 piece per polybag- n. 10 pcs per export carton</b>		
Istruzioni lavaggio/ Care label:			
Nota / Notes :	<b>tessuto stabilizzato anti-restringimento, fondo e polsini elasticizzati / anti-shrinkage stabilized fabric, elasticised bottom and cuff</b>		

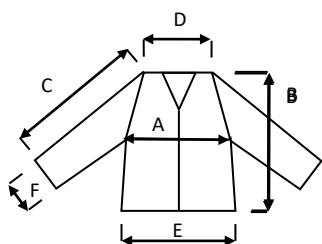
Conformità alle norme CE/Conformity with EC standards			
Cat.DPI/ PPE Category:	<b>I</b>	Norme CE e livelli di protezione/ EC standards and protection levels:	<b>EN ISO 13688:2013</b> <i>( Rif . Test Report RdP no: 18rt02835 by RITEX *)*Accredia Lab n. 0315 L</i>
Certificato d'esame UE del tipo n° / UE type-examination certificate No.:	-	Data/ Date:	-
Ente notificato/notify body:	-	N°/ No.:	-
Lingue nota Informativa/ Manufacturer's notes languages:	<b>IT,ES,CZ,PL,EN,PT,SK,HU,FR,DE,LT,RS,GR,SI,LV,HR,EE,TR,RO</b>		

Scheda tecnica indumento/Garment technical data sheet. 04845.00



		Misure delle taglie/Size measurements [cm]					
		S	M	L	XL	XXL	XXXL
A. Torace / Chest:		106	110	114	118	122	126
B. Lunghezza tot. / Tot. length:		69	71	73	75	77	79
C. Manica / Sleeves:		58	60	62	64	66	68
D. Spalla / Shoulder :		46	48	50	52	54	56
E. Fondo / Bottom:		84	84	88	88	92	92
F. Polsino / Sleeve opening:		8,5	8,5	9	9	9,5	9,5

Disegno e foto/Drawing and photo



Vicenza, 10/09/2019

Resp. acquisti/Purchasing manager